

The Mohawk Group Commercial Sheet Flooring



Please Note

The following Styles / Colors
have been discontinued

Uptown / Colors 51060 & 51065
Slate Work / Color 51051
High Society / All Colors
Main Street / All Colors

FLOR-EVER® PLUS

Flor-Ever Plus with antimicrobial product protection is the perfect flooring choice for both work and living spaces where the performance of a light commercial floor is required.

FEATURES

- Antimicrobial Protection.....Contains Silver, nature's own antimicrobial protection, encapsulated in a glass matrix to guard the floor against bacteria, mold and mildew.
- Designed to easily coordinate with both commercial and residential interiors including 30 contemporary colorations available in stone, slate, wood and overall designs.
- A durable wearlayer, fortified with aluminum oxide and combined with a tough overall construction, provides superior performance and reduced maintenance.
- Styled and constructed for use in a variety of environments, Flor-Ever Plus is recommended for assisted and retirement living facilities, government housing, student housing, offices, schools, retail shops and main street applications.
- FloorScore certified product for indoor air quality performance.
- Available in 12' widths for reduced seams and installation costs.



- Sample below represents actual product construction



- All other swatches shown in this portfolio are representative of design, coloration and texture only.

MAIN STREET™

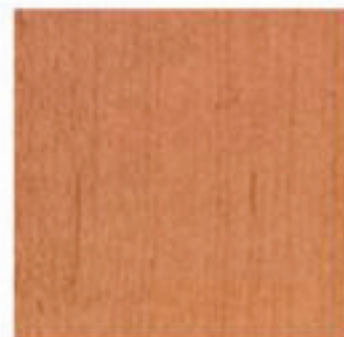
MAPLE RANDOM WIDTH PLANK PATTERN



51000 Blonde



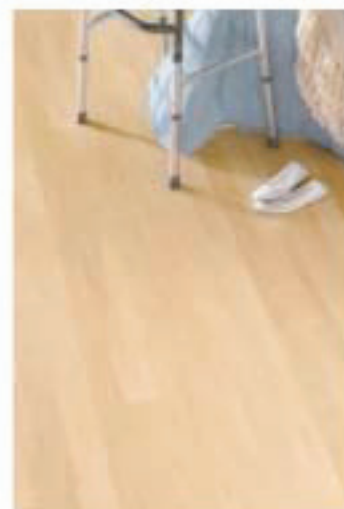
51001 Toast



51002 Nutmeg



51003 Cocoa



SELECT OAK™

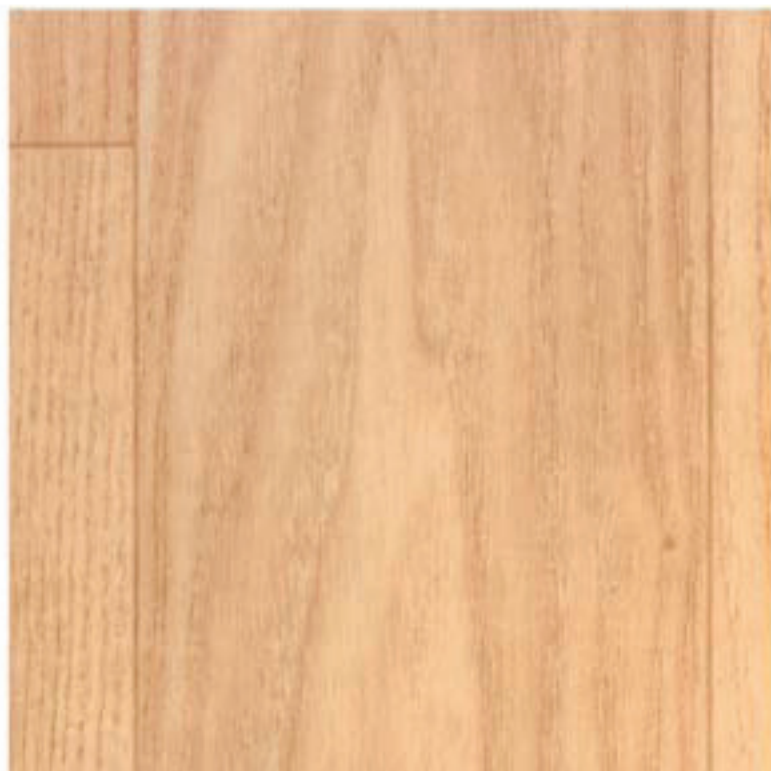
3" OAK PLANK PATTERN



51010 Pure Oak



51011 Natural Oak



51012 Medium Oak



51013 Dark Oak



• Refer to Pattern Specification Chart for pattern repeat information

HIGH SOCIETY™

13 1/2" TRAVERTINE TILE PATTERN



51020 Alfredo



51021 Biscotti



51022 Cappuccino



BUILDING BLOCKS™

6" SLATE TILE PATTERN



51032 Oyster Shell



51030 Coconut Cream



51031 Sandbox



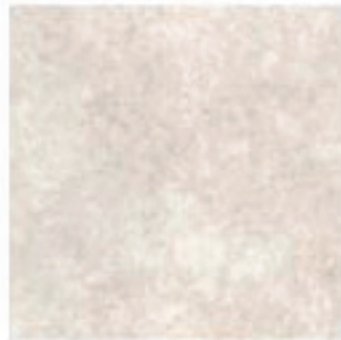
• Refer to Pattern Specification Chart for pattern repeat information

METROPOLIS™

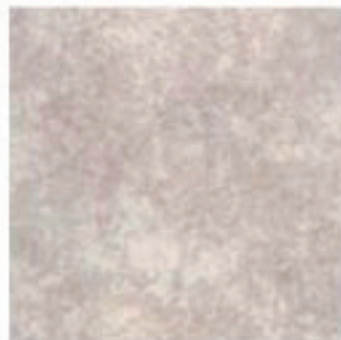
OVERALL PATTERN



51040 New White



51041 Cornerstone Beige



51042 Monument Gray

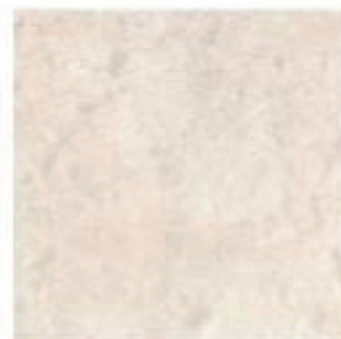
51043 Earthen Clay

SLATE WALK™

9" SLATE TILE PATTERN



51052 Natural Slate



51050 Smooth Ivory



51051 Rustic Beige



• Refer to Pattern Specification Chart for pattern repeat information



51060 Eggshell



51061 Sand Bar



51064 Porcelain



51062 Oatmeal



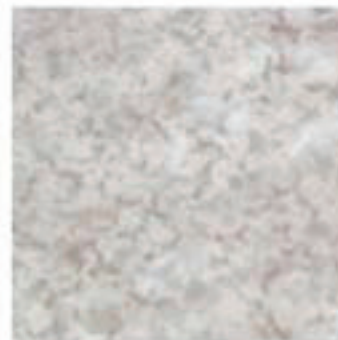
51063 Seagrass



51065 Granola



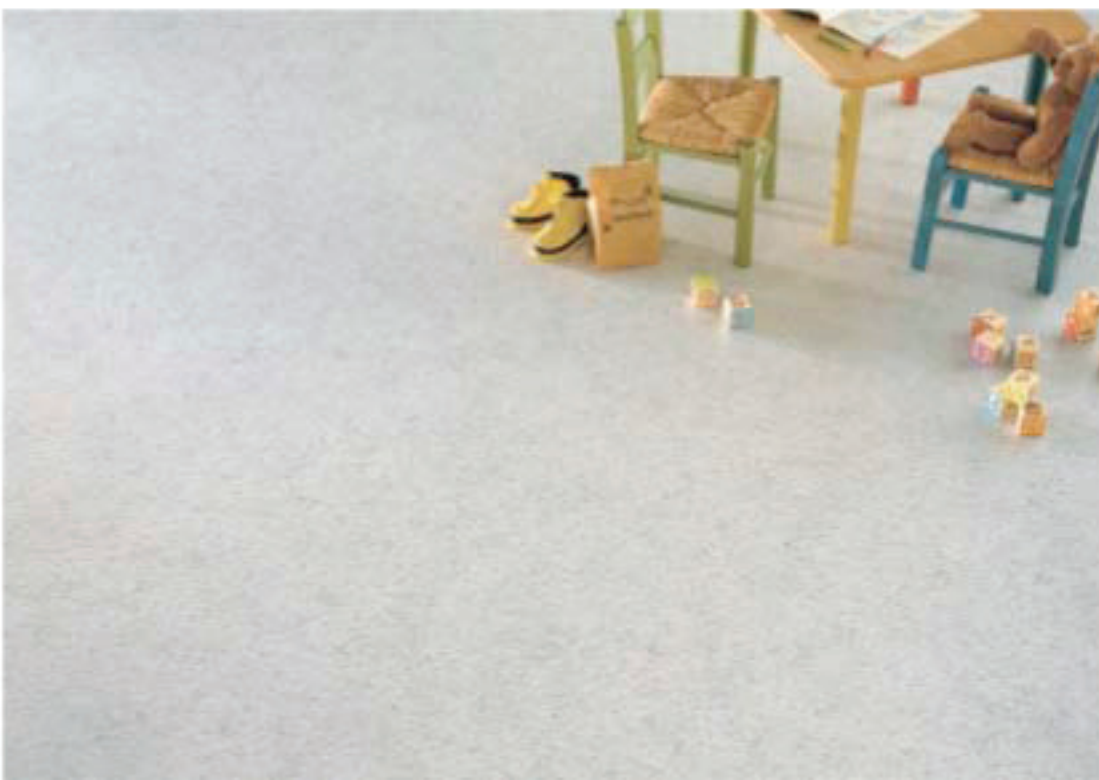
51066 Suede



51067 Brushed Pewter



51068 Modern Mauve



- All swatches shown in this portfolio are representative of design, coloration and texture only. Shade and texture may vary from actual sample.
- An actual sample of the Flor-Ever Plus product construction is displayed on the front panel.
- Refer to Pattern Specification Chart for pattern repeat information.
- Customer Service: 800.241.4066
- Samples: 888.740.6936
- Congoleum Tech Line: 609.584.3888 (Installation/Maintenance)

manufactured by

Congoleum



METROPOLIS



BUILDING BLOCKS



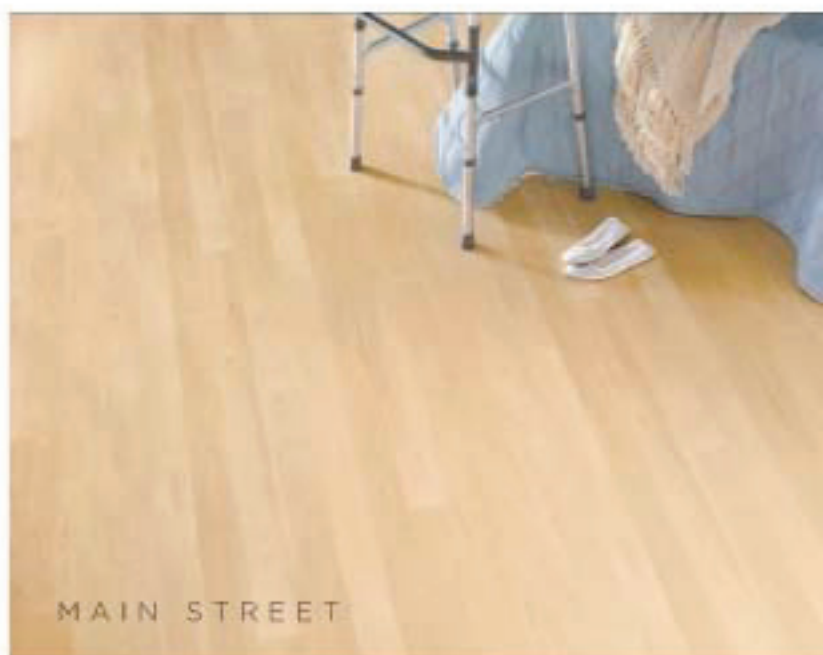
SLATE WALK



UPTOWN



SELECT OAK



MAIN STREET



HIGH SOCIETY

TECHNICAL DATA/ REFERENCE SPECIFICATIONS

Number of Designs	7
Number of Colors	30
Width	12'
Length	Up to 90'
Weight	3.85 lbs/sq. yd.
Gauge:	
- Overall	.090" Nominal (2.03mm)
- Wearlayer	.020" (0.51mm)
Reference Specification:	
- ASTM F 1303	Type I, Grade I, Class A
Fire Test Data:	
- ASTM E 648; NFPA-253; Critical Radiant Flux - 0.45 watts/cm ² or greater	YES
- ASTM E 662; NFPA-258; NBS Smoke Density - 450 or less	YES
- D.O.T. Motor Vehicle Safety Standard 302	YES
Static Load Limit - ASTM F 970	175 psi
HDI/PHA Minimum Property Standards	YES
Installation/Maintenance Specifications:	
- Recommended Subfloor	Suspended wood, concrete, all grade levels
- Recommended Adhesive	Congoleum 3044 Fully Adhered
- Seam Sealer	SU90 or SU92
- Seaming Procedure	Overlap and Double Cut; Chemical Weld
- Maintenance	Spray buff to restore the gloss. Polish is optional.
Warranty	Five-Year Commercial Limited Warranty
Durability	Excellent
Ease of Maintenance	Excellent

PATTERN SPECIFICATIONS

DESIGN NAME	DESIGN MATCH	CROSS DIRECTION MATCH	DO NOT REVERSE
Main Street	None	36"	✓
Select Oak	27"	18"	✓
High Society	27"	26 1/8"	✓
Building Blocks	18"	18"	✓
Metropolis	27"	32"	✓
State Walk	9"	18"	✓
Uptown	None	None	✓

ARCHITECTURAL SPECIFICATIONS

FLOR-EVER PLUS SHEET FLOORING

Provide Flor-Ever Plus commercial sheet flooring as manufactured by Congoleum Corporation (give color number). The flooring shall have a translucent vinyl wearlayer minimum .020" (0.51mm) gauge, a cushion high-density vinyl foam, a White Shield fibrous backing and a .080" nominal (2.03mm) gauge overall thickness. Flooring shall meet reference specification ASTM F 1303, Type I, Grade I, Class A. Floor shall meet D.O.T. Motor Vehicle Safety Standard 302. The recommended static load limit shall be 175 psi.

WARRANTY INFORMATION

5-YEAR COMMERCIAL LIMITED WARRANTY

Congoleum warrants to its customers that Flor-Ever Plus commercial flooring sold by it as regulars (first quality) for its recommended use will be free from manufacturing defects and will not discolor from mold, mildew or alkali for a period of five years from the date of original purchase.

For detailed warranty, installation or maintenance information, see your local contract retailer or write to Congoleum Corporation, Department C, P.O. Box 3127, Mercerville, NJ 08619-0127 or visit our web site at www.congoleum.com.



Complete details are available at www.rfci.com

manufactured by **Congoleum**

Customer Service: 800.241.4066

Samples: 888.740.6936

Congoleum Tech Line: 609.584.3888
(Installation/Maintenance)

The Mohawk Group

500 TownPark Lane, Suite 400 • Kennesaw, Georgia 30144 • 800.554.6637 • mohawkgroup.com

KARASTAN
CONTRACT

DURKAN
COMMERCIAL

MOHAWK
COMMERCIAL

BIGELOW
COMMERCIAL

DURKAN
RESIDENTIAL