

# The Mohawk Group Commercial Sheet Flooring



# FLOR-EVER® PLUS

Flor-Ever Plus with antimicrobial product protection is the perfect flooring choice for both work and living spaces where the performance of a commercial floor is required.

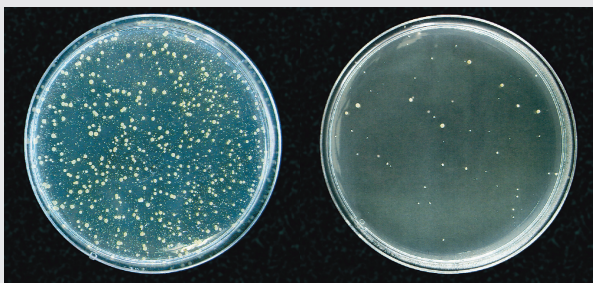
## FEATURES

- Antimicrobial Protection
- Durable wearlayer fortified with aluminum oxide
- Designed for Commercial and Residential Interiors
  - 7 Designs
  - 30 Colorations
- Meets ASTM Specification 1303F
- 12' Widths

## WHAT MAKES FLOR-EVER PLUS UNIQUE?

Flor Ever Plus has unique features that other commercial sheet floors don't offer!

- **Aluminum Oxide** – Aluminum oxide is included in the wearlayer to provide superior performance.
- **Antimicrobial Protection** – Flor-Ever Plus contains Silver, nature's own antimicrobial protection, encapsulated in a glass matrix to guard the floor against bacteria, mold and mildew.



WITHOUT ANTIMICROBIAL PROTECTION

WITH ANTIMICROBIAL PROTECTION

Lab testing with our antimicrobial ingredient, silver, shows it kills a wide variety of bacteria, mold and mildew. Real silver is safe and provides natural antimicrobial product protection.

## RECOMMENDED INSTALLATIONS

### Commercial Applications

- Educational/Institutional
- HealthCare/Hospitals
- Light Industrial
- Hospitality
- Office
- Retail

### Residential Applications

- Military Housing
- Assisted Living
- Nursing Home
- Retirement Housing
- Low-Income Housing
- Residential Housing

## WHAT OTHER PRODUCTS COMPETE WITH FLOR-EVER PLUS?

- **Armstrong** – Commissions Plus
- **Mannington** – Insight Custom Spec II

## WHAT DOES FLOORSORE CERTIFIED MEAN?



The FloorScore program, developed by the Resilient Floor Covering Institute (RFCI) in conjunction with Scientific Certification Systems (SCS), tests and certifies flooring products for compliance with indoor air quality emission requirements adopted in California.

**DESIGNS**

Flor Ever Plus is designed to easily coordinate both commercial and residential interiors featuring 7 designs and 30 colorations.



BUILDING BLOCKS



METROPOLIS



UPTOWN



SLATE WALK



MAIN STREET



SELECT OAK



HIGH SOCIETY

# TECHNICAL DATA/ REFERENCE SPECIFICATIONS

Number of Designs	7
Number of Colors	30
Width	12'
Length	Up to 90'
Weight	3.85 lbs/sq. yd.
Gauge:	
- Overall	.080" Nominal (2.03mm)
- Wearlayer	.020" (0.51mm)
Reference Specification:	
- ASTM F 1303	Type I, Gr. 1, Class A
Fire Test Data:	
- ASTM E 648; NFPA-253; Critical Radiant Flux – 0.45 watts/cm <sup>2</sup> or greater	YES
- ASTM E 662; NFPA-258; NBS Smoke Density – 450 or less	YES
- D.O.T. Motor Vehicle Safety Standard 302	YES
Static Load Limit – ASTM F 970	175 psi
HUD/FHA Minimum Property Standards	YES
Installation/Maintenance Specifications:	
- Recommended Subfloor	Suspended wood, concrete, all grade levels
- Recommended Adhesive	Congoleum 3044 Fully Adhered
- Seam Sealer	SU80 or SU92
- Seaming Procedure	Overlap and Double Cut; Chemical Weld
- Maintenance	Spray buff to restore the gloss. Polish is optional.
Warranty	Five-Year Commercial Limited Warranty
Durability	Excellent
Ease of Maintenance	Excellent



## PATTERN SPECIFICATIONS

DESIGN NAME	DESIGN MATCH	CROSS DIRECTION MATCH	DO NOT REVERSE
Main Street	None	36"	✓
Select Oak	27"	18"	✓
High Society	27"	26.18"	✓
Building Blocks	18"	18"	✓
Metropolis	27"	72"	✓
Slate Walk	9"	18"	✓
Uptown	None	None	✓

Congoleum and Flor-Ever are registered trademarks of Congoleum Corporation. Building Blocks, Flor-Ever Plus, High Society, Main Street, Metropolis, Sample Express, Select Oak, Slate Walk and Uptown are trademarks of Congoleum Corporation. FloorScore and the FloorScore logo are certification marks of the Resilient Floor Covering Institute. The SCS name, logo and certification emblem are trademarks, service marks and/or certification marks of Scientific Certification Systems, Inc ("SCS").

CONGOLEUM



COMMERCIAL

**Congoleum**<sup>®</sup>

P.O. Box 3127  
Mercerville, NJ 08619-0127  
www.congoleum.com