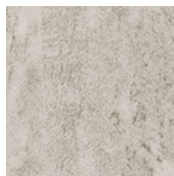
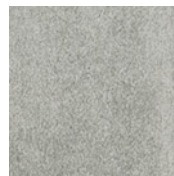
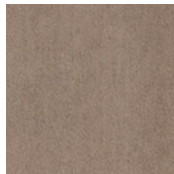
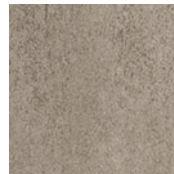
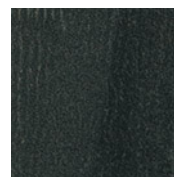


663 Lagoon

233  
Playa926  
Frost326  
Illumen663  
Lagoon372  
Fossil342  
Clay888  
Coffee928  
Galena985  
Iguazu999  
Hot Stone**DESIGN**

|                             |   |
|-----------------------------|---|
| Product Type .....          | Resilient Tile  |
| Overall Gauge .....         | 0.10" (2.5mm)   |
| Wear Layer .....            | 20 mil (0.5mm)  |
| Finish .....                | M-Force™ Enhanced Urethane  |
| Texture .....               | Light Emboss  |
| Edge Profile .....          | Microbevel  |
| Colors Available .....      | 10  |
| Size .....                  | 18" x 36" (457.2mm x 914.4mm)   |
| Packaging .....             | 40.5 sf/ctn (3.76 m2/ctn); 9 pcs/ctn;<br>38.18 lbs/ctn (17.31 kg/ctn)               |
| Installation .....          | Glue Down   |
| Recommended Adhesive .....  | M95.0 Resilient Flooring Adhesive, MS160 Spray,<br>M700 Pressure Sensitive Adhesive |
| Optional Underlayment ..... | Mohawk AccuSound™   |

**SELLING FEATURES**

- Sophisticated linear design inspired by concrete and sandstone
- Updated 18" x 36" format
- M-Force™ Enhanced Urethane and 20 mil wear layer for heavy commercial traffic
- No Polish maintenance reduces costs associated with long term cleaning
- QuickShip

**PERFORMANCE**

|                               |   |
|-------------------------------|---|
| Construction .....            | Commercial Grade Resilient Tile                               |
| Classification .....          | ASTM F1700 - Class III, Type A - Smooth,<br>Type B - Embossed |
| Squareness .....              | ASTM F2055 - Passes - 0.010 in. max                           |
| Size and Tolerance .....      | ASTM F2055 - Passes - ± 0.016 in. per linear foot             |
| Thickness .....               | ASTM F386 - Passes - Nominal ± 0.005 in.                      |
| Dimensional Stability .....   | ASTM F2199 - Passes - ≤ 0.024 in. per linear foot             |
| Static Load Limit .....       | ASTM F970 - Passes - modified - 1500 psi                      |
| Residual Indentation .....    | ASTM F1914 - Passes - Average less than 8%                    |
| Slip Resistance .....         | ASTM D2047 - Passes - > 0.6 Wet, 0.6 Dry                      |
| Resistance to Chemicals ..... | ASTM F925 - Passes - No Change or Slight Change               |
| Resistance to Light .....     | ASTM F1515 - Passes - ΔE ≤ 8                                  |
| Resistance to Heat .....      | ASTM F1514 - Passes - ΔE ≤ 8                                  |
| Critical Radiant Flux .....   | ASTM E648 - Passes - ≥ 45 watts/cm², Class 1                  |
| Smoke Density .....           | ASTM E662 - Passes  |

**SUSTAINABILITY**

|                                  |  |
|----------------------------------|--|
| Certification .....              | FloorScore® Certified  |
| Bio-Based Content .....          | Contains a minimum of 8% bio-based renewable resource content by total product weight  |
| Phthalate-Free Composition ..... | Avoids harmful phthalates by substituting a new bio-based rapidly renewable plasticizer without sacrificing performance, quality and maintenance |

**SERVICE**

|                  |                            |
|------------------|----------------------------|
| Warranties ..... | Limited 10 Year Commercial |
|------------------|----------------------------|